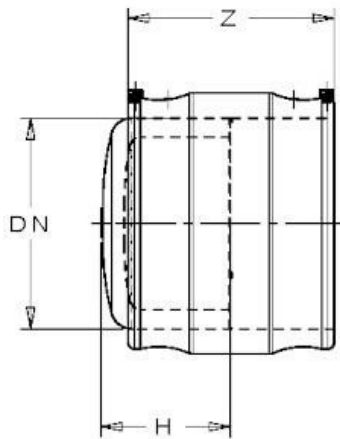




Electrofusion End Cap



Description

Electrofusion end cap for applications under pressure, manufactured by injection moulding of high-density polyethylene in accordance with standards EN12201-3 and EN1555-3.

The fitting is supplied by a company operating under a quality system according to UNI EN ISO 9001:2015, certified and validated by an accredited third party.

Dimensions

| DN/OD | H | Z | SDR |
|-------|-----|-----|-----|
| DN | H | Z | SDR |
| 20 | 53 | 92 | 11 |
| 25 | 40 | 49 | 11 |
| 32 | 36 | 49 | 11 |
| 32 | 60 | 103 | 11 |
| 40 | 64 | 110 | 11 |
| 50 | 46 | 61 | 11 |
| 63 | 82 | 139 | 11 |
| 75 | 87 | 148 | 11 |
| 90 | 102 | 167 | 11 |
| 110 | 104 | 180 | 11 |
| 125 | 110 | 189 | 11 |
| 140 | 114 | 200 | 11 |
| 160 | 130 | 224 | 11 |
| 180 | 122 | 218 | 11 |
| 200 | 157 | 263 | 11 |
| 225 | 142 | 256 | 11 |
| 250 | 151 | 274 | 11 |
| 280 | 154 | 279 | 11 |
| 315 | 200 | 333 | 11 |

The Company reserves the right to change the dimensional characteristics listed in the table without prior notice while maintaining the performance indicated.

Correspondence SDR - PN - Series

| SDR | PN (PE100) | S (EN 1555) |
|-----|------------|-------------|
| 26 | 6 | - |
| 17 | 10 | 8 |
| 11 | 16 | 5 |
| 7,4 | 25 | - |

