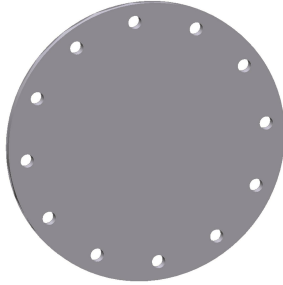




### Galvanized steel blind flange PN25



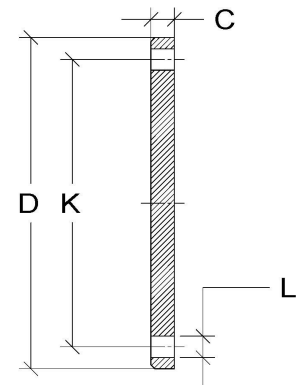
#### Description

Blind flange in galvanized steel PN25, manufactured by drilling in accordance with standard UNI EN 1092-1

The fitting is supplied by a company operating under a quality system according to UNI EN ISO 9001:2015, certified and validated by an accredited third party.

#### Dimensions

DE	DN	K	C		D	L	n° holes	Vite
			Reduced	Nominal				
20	15	65	12	14	95	14	4	M 12
25	20	75	12	16	105	14	4	M 12
32	25	85	12	16	115	14	4	M 12
40	32	100	14	18	140	18	4	M 16
50	40	110	14	18	150	18	4	M 16
63	50	125	14	20	165	18	4	M 16
75	65	145	14	22	185	18	8	M 16
90	80	160	15	24	200	18	8	M 16
110	100	190	15	26	235	22	8	M 20
125	100	190	15	26	235	22	8	M 20
140	125	220	16	28	270	26	8	M 24
160	150	250	16	30	300	26	8	M 24
180	150	250	16	30	300	26	8	M 24
200	200	310	18	32	360	26	12	M 24
225	200	310	18	32	360	26	12	M 24
250	250	370	20	35	425	30	12	M 27
280	250	370	20	35	425	30	12	M 27
315	300	430	22	38	485	30	16	M 27
355	350	490	24	42	555	33	16	M 30
400	400	550	26	48	620	36	16	M 33
450	500	660	28	58	730	36	20	M 33
500	500	660	28	58	730	36	20	M 33
560	600	770	30	68	845	39	20	M 36
630	600	770	30	68	845	39	20	M 36
710	700	875	30	85	960	42	24	M 39
800	800	990	32	95	1085	48	24	M 45
900	900	1090	32	*	1185	48	28	M 45
1000	1000	1210	35	*	1320	56	28	M 52



The Company reserves the right to change the dimensional characteristics listed in the table without prior notice while maintaining the performance indicated.

