



Galvanized steel flange PN16 for PE stub end



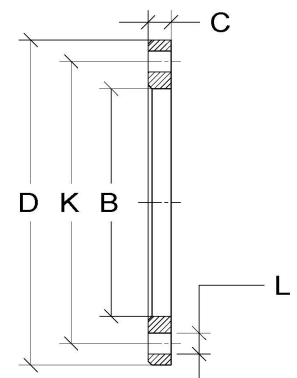
Description

Galvanized steel flange PN16, manufactured by drilling in accordance with standard UNI EN 1092-1

The fitting is supplied by a company operating under a quality system according to UNI EN ISO 9001:2015, certified and validated by an accredited third party.

Dimensions

DE	DN	B	K	C		D	L	n° holes	Vite
				Reduced	Nominal				
20	15	28	65	10	14	95	14	4	M 12
25	20	34	75	10	16	105	14	4	M 12
32	25	43	85	10	16	115	14	4	M 12
40	32	50	100	12	18	140	18	4	M 16
50	40	62	110	12	18	150	18	4	M 16
63	50	78	125	12	20	165	18	4	M 16
75	65	95	145	12	20	185	18	4	M 16
90	80	109	160	13	20	200	18	8	M 16
110	100	130	180	13	22	220	18	8	M 16
125	100	135	180	13	22	220	18	8	M 16
140	125	160	210	14	22	250	18	8	M 16
160	150	180	240	14	24	285	22	8	M 20
180	150	190	240	14	24	285	22	8	M 20
200	200	235	295	16	26	340	22	12	M 20
225	200	238	295	16	26	340	22	12	M 20
250	250	288	355	18	29	405	26	12	M 24
280	250	294	355	18	29	405	26	12	M 24
315	300	338	410	20	32	460	26	12	M 24
355	350	376	470	20	35	520	26	16	M 24
400	400	430	525	22	38	580	30	16	M 27
450	500	517	650	22	46	715	33	20	M 30
500	500	533	650	22	46	715	33	20	M 30
560	600	618	770	25	55	840	36	20	M 33
630	600	645	770	25	55	840	36	20	M 33
710	700	740	840	25	63	910	36	24	M 33
800	800	843	950	28	74	1025	39	24	M 36
900	900	947	1050	28	82	1125	39	28	M 36
1000	1000	1050	1170	30	90	1255	42	28	M 39
1200	1200	1248	1390	30	90	1485	48	32	M 45



The Company reserves the right to change the dimensional characteristics listed in the table without prior notice while maintaining the performance indicated.

