



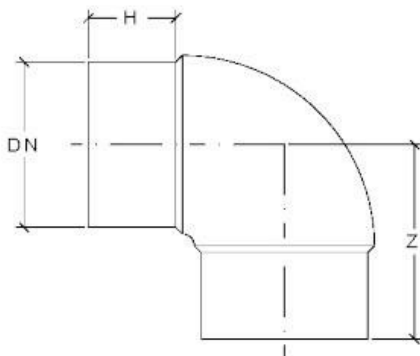
### Long spigot injection moulded PE100 RC 90° elbow



#### Description

Long spigot 90° elbow for pressurized applications, manufactured by injection moulding of high-density polyethylene PE100 RC in accordance with standards EN12201-3 and EN1555-3.

The fitting is supplied by a company operating under a quality system according to UNI EN ISO 9001:2015, certified and validated by an accredited third party.



#### Dimensions

DN/OD	H	Z	SDR
mm	mm	mm	-
20	38	59	11÷7,4
25	45	69	11÷7,4
32	50	74	11÷7,4
40	57	85	11÷7,4
50	56	88	11÷7,4
63	68	113	17÷7,4
75	73	128	17÷7,4
90	82	152	17÷7,4
110	90	168	17÷7,4
125	91	179	17÷7,4
140	96	194	17÷7,4
160	103	211	17÷7,4
180	106	224	17÷7,4
200	116	249	17÷7,4
225	121	264	17÷7,4
250	131	297	17÷7,4
280	141	338	17÷7,4
315	152	356	17÷7,4
355	169	378	17÷7,4
400	188	419	17÷7,4

#### Correspondence SDR - PN - Series

SDR	PN (PE100)	S (EN 1555)
26	6	-
17	10	8
11	16	5
7,4	25	-

The Company reserves the right to change the dimensional characteristics listed in the table without prior notice while maintaining the performance indicated.

