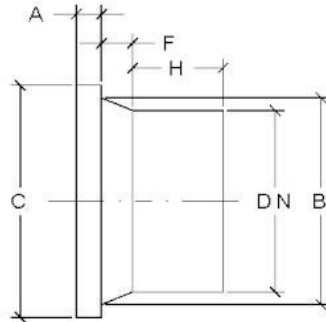




Long spigot stub end for water/gas under pressure PE100 RC



Description

Long spigot stub end for pressurized applications, manufactured by injection moulding of high-density polyethylene PE100 RC in accordance with standards EN12201-3 and EN1555-3.

The fitting is supplied by a company operating under a quality system according to UNI EN ISO 9001:2015, certified and validated by an accredited third party.

SDR17

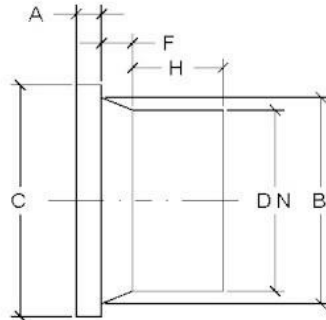
Dimensions

DE	H	F	B	C	A
mm	mm	mm	mm	mm	mm
63	64	21	75	103	14
75	75	20	89	123	16
90	87	18	105	139	17
110	96	25	125	159	18
125	100	24	132	159	18
140	100	32	155	189	18
160	106	33	175	213	18
180	114	29	180	213	20
200	121	38	232	269	24
225	110	45	235	269	24
250	129	35	285	321	25
280	148	22	291	321	25
315	152	38	335	371	25
355	171	33	373	431	30
400	187	39	427	483	33





Long spigot stub end for water/gas under pressure PE100 RC



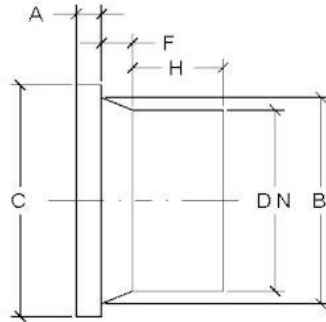
SDR11 Dimensions

DE	H	F	B	C	A
mm	mm	mm	mm	mm	mm
20	64	16	26	44	8
25	45	15	33	59	9
32	57	16	40	69	10
40	55	15	50	79	11
50	55	20	61	89	13
63	64	23	75	103	14
75	74	26	89	123	16
90	82	22	105	139	17
110	91	33	125	159	18
125	102	22	132	159	25
140	102	31	155	189	25
160	109	31	175	213	25
180	114	28	180	213	30
200	117	46	232	269	32
225	113	44	235	269	32
250	128	36	285	321	35
280	150	23	291	321	35
315	153	40	335	371	35
355	173	34	373	431	40
400	190	37	427	483	45





Long spigot stub end for water/gas under pressure PE100 RC



SDR7.4

Dimensions

DE	H	F	B	C	A
mm	mm	mm	mm	mm	mm
25	45	14	34	59	10
32	56	15	40	69	11
40	56	12	50	79	12
50	55	19	61	89	13
63	63	22	75	103	16
75	73	22	89	123	18
90	82	24	105	139	20
110	91	31	125	159	21
125	101	23	132	159	28
140	102	33	155	189	29
160	106	33	175	213	29
180	114	32	180	213	32
200	116	50	232	269	34
225	115	50	235	269	34
250	129	36	285	332	37
280	153	20	291	332	42
315	154	37	335	392	47

Correspondence SDR - PN - Series

SDR	PN (PE100)	S (EN 1555)
26	6	-
17	10	8
11	16	5
7,4	25	-

The Company reserves the right to change the dimensional characteristics listed in the table without prior notice while maintaining the performance indicated.

